

Beginning Teacher PLC Newsletter | 1 Sept., 2022

WELCOME BACK TO SCHOOL

THIS MONTH'S FOCUS: LICENSE RENEWAL

I'm Kami Dupree, an Educator Development Specialist with the Utah State Board of Education. Welcome to the Beginning Teacher PLC! I am excited to engage with you, through this monthly newsletter, and to bring you relevant information to improve instruction and guide your transition to the wonderful and challenging world of education.

This month, you'll find information about how to access professional learning through UEN and within the MIDAS system. You'll also find valuable information about preparing to renew your educator license.



Please don't hesitate to contact me if I can assist you in any way: kami.dupree@schools.utah.gov

WANT TO LEARN EVEN MORE? CREATE AN ACCOUNT WITH UEN!

The Utah Education Network (UEN) is a vast network of professional learning resources for teachers in Utah.

Open a free myUEN account today by visiting my.uen.org/myuen/guest/1

WHERE CAN I FIND PROFESSIONAL LEARNING?

MIDAS is Utah's professional development tracking system. You can find a catalog of professional learning opportunities, register for available professional learning, and get a personal transcript of completed professional learning at usbe.midaseducation.com

HOW DO I KNOW WHEN TO RENEW MY LICENSE?

Visit USIMS (Utah Schools Information Management System) to view license status and renewal information. <https://usims.schools.utah.gov>



PREPARING FOR LICENSE RENEWAL

FAQ

Did you know that Utah educators must regularly renew their license (typically every 5 years)?

What is required to renew my Professional License?

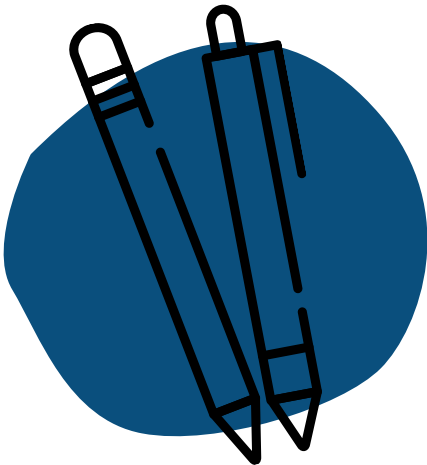
- Complete the Educator Ethics Review in [USIMS](#) during the year prior to the date of renewal;
- Maintain ongoing background monitoring;
- Complete the [Utah Student Data Privacy Educator Course](#);
- Complete a [Youth Suicide Prevention Training](#); and
- Complete 100 license renewal hours during the five years prior to the date of renewal.*

*renewal hours typically provided by school or district professional learning, PLC and data team work, etc.

HOW DO I EARN LICENSE RENEWAL HOURS?

1 hour of time = 1 renewal hour

- **Professional Learning Experiences (90 hour maximum)**
Learning experiences in curriculum development, school improvement, mentoring and training new teachers, and instructional coaching.
- **Educator Collaboration Opportunities (30 hour maximum)**
Opportunities in which educators engage in data analysis in collaboration with colleagues to inform instructional adjustments and student need, including through professional learning communities.
- **Professional Service (50 hour maximum)**
Service in a local, state, or national government or professional education association leadership role.
- **Alternate Learning Activities (30 hour maximum)**
Activities that enhance or improve the education-related skills and knowledge of an educator serving in school, but not in a role as a primary educator (e.g., paraprofessional, volunteering, substituting, presenting at a conference, educational research).



FOR MORE INFORMATION:

[USBE Educator Licensing Website](#)

[USBE Educator License Renewal Website](#)

[USBE License Renewal Rules](#)

[MIDAS - Professional Learning](#)

[USIMS - Educator Licensing Management](#)

[UEN - Utah Education Network](#)